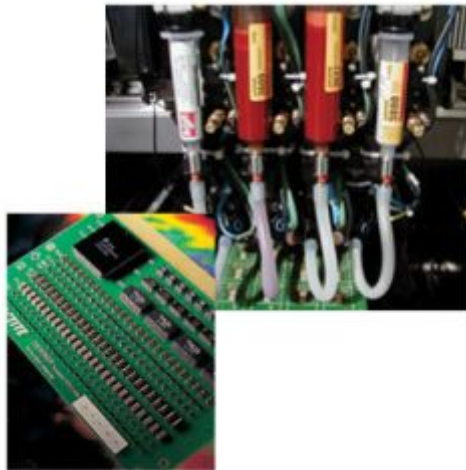


# Loctite 3615 Chipbonder Surface Mount Adhesives

## Product Images

---



## Description

---



Loctite 3615 has been designed for the bonding of surface mounted devices to printed circuit boards

- Chemical type - epoxy
- Red viscous gel appearance uncured
- One component
- Dispense method - syringe
- Heat cure
- SMD components to PCB
- High wet strength