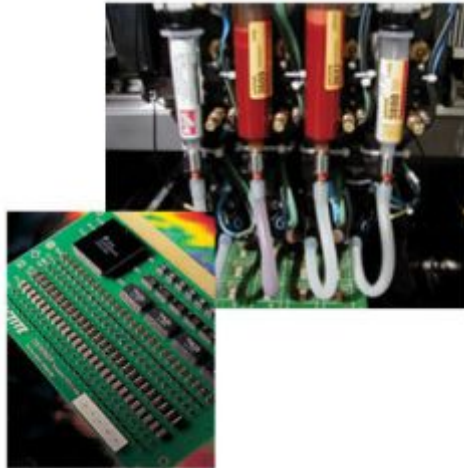


# Loctite 3621 Chipbonder Surface Mount Adhesives

## Product Images

---



## Description

---

Loctite 3621 is particularly suited where dispense speeds greater than 35,000 dots/h are required. Designed for bonding of surface mounted devices to printed circuit boards, Loctite 3621 has been used successfully in lead free processes

- Dispense method - syringe
- SMD components to PCB
- Dispense speed - very high (25,000 - 50,000 dots/h)
- One component
- Appearance when uncured - red viscous gel
- Chemical type - epoxy
- Wet strength - high