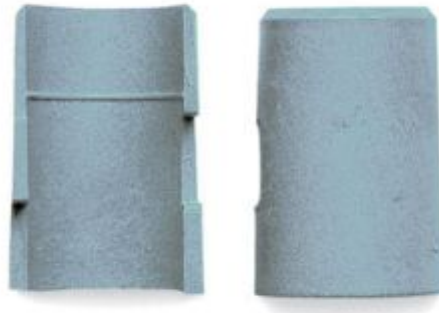


Metro Conductive Plastic Sleeves

Product Images



Description

The Metro Conductive Plastic Sheets are for ESD protected environments. The Conductive Plastic Sheets change any chrome plated shelf into a conductive one, with the addition of a grounding cable or conductive casters

- Quick and easy to install
- Packed 4 sets to a bag
- 3 types of split sleeves available, Regular, Conductive versions for ESD grounding and one for stainless steel shelving