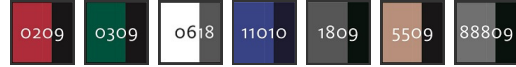




18349-230 Shorts

two-toned - extra lightweight

MASCOT® UNIQUE



C42	C43	C44	C45	C46	C47	C48	C49	C50	C51
C52	C54	C56	C58	C60	C62	C64	C66	C68	

50% cotton/50% polyester
205 g/m²



Twill. Shrinkage 1-2%.

Industrial care category A2

CORDURA
F A B R I C

Certifications



Logo

Logo placement:

- Workwear logo. Left back pocket. Max 10x3 cm/3.9x1.1 inches
- Workwear logo. Right back pocket. Max 10x3 cm/3.9x1.1 inches
- Workwear logo. Vertical on left thigh, read from the bottom upwards. Max 25x5 cm/9.8x1.9 inches
- Workwear logo. Horizontal on left thigh. Max 9x5 cm/3.5x1.9 inches
- Workwear logo. Vertical on right thigh, read from the top downwards. Max 25x5 cm/9.8x1.9 inches
- Workwear logo. Horizontal on right thigh. Max 11x5 cm/4.3x1.9 inches
- Workwear logo. Horizontal on left calf. Max 12x6 cm/4.7x2.3 inches
- Workwear logo. Horizontal on right calf. Max 12x6 cm/4.7x2.3 inches
- Workwear logo. Special placement. Contact to discuss further



- Light material suited to warm surroundings.
- Durable triple stitched seams on leg and crotch extend product life.
- Low waist with form-cut waistband ensures comfort and freedom of movement.
- Special design of the front pocket that allows easy access to the pocket content.
- Slanted, spacious thigh pockets with easily accessible phone pocket.
- Reinforced back pockets and ruler pocket.

Technical info

Two-toned. Light fabric. Triple stitched seams at leg and crotch. Low waist and form cut waist band. Belt loops. D-ring. Fly with zip. Tool strap at waist. Spacious front pockets with CORDURA® reinforcements - one with an inner easily accessible phone pocket. Back pockets with reinforcement. Adjustable hammer loop. Thigh pocket with phone pocket and flap with hidden press studs. CORDURA® fabric reinforced ruler pocket. Pen pocket. An extra layer of fabric has been used to reinforce the back of this product, where the back pocket, thigh pocket and ruler pocket is attached.

User

